



optical 3D measurement and inspection

aliconna

Offline License

Measurements of Existing 3D Datasets

Your InfiniteFocus system is a valuable resource to collect and measure data. However, if there is a large amount of data to evaluate this can lead to the instrument being unavailable to other users.

You can easily improve efficiency and flexibility by using an offline license on another workstation.



INFINITEFOCUS®

» Offline Modules

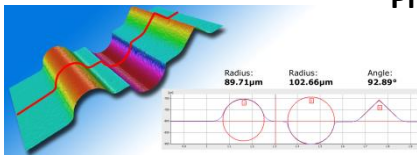
The offline license includes all standard measurement modules for measuring form and roughness.

Optional modules offer extended form measurements. These modules especially focus on full 360° measurements. All optional modules can be ordered separately or as a package.

The capabilities of the measurement modules are outlined in the following paragraphs.

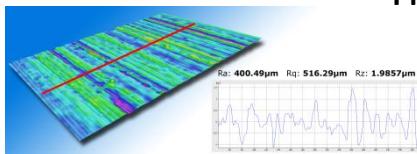
» Standard Measurement Modules

Profile-Form-Measurement



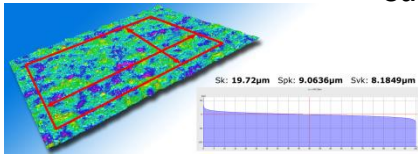
Simply define a profile and measure radii, angles, distances and height steps either automatically or manually.

Profile-Roughness-Measurement



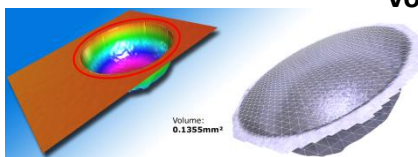
Roughness and waviness are usually measured via a profile if surfaces show a preferential direction. Moreover, this module allows to simulate line based methods.

Surface-Texture-Measurement



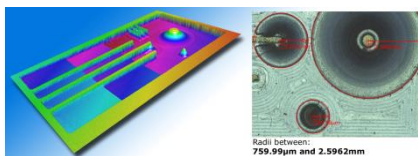
In contrast to measuring the roughness of only a line profile, InfiniteFocus also provides area based measurements.

Volume-Measurement



A single pit or the volume of the entire surface is measured. In addition, a reference surface is calculated automatically.

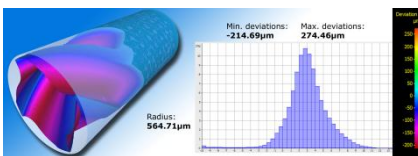
2D-Image-Measurement



Simple primitives are measured manually or semi automatically in 2D.

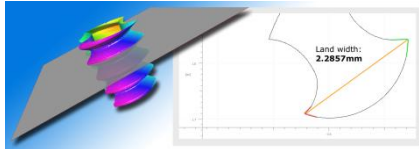
» Optional Measurement Modules

3D-Form-Measurement



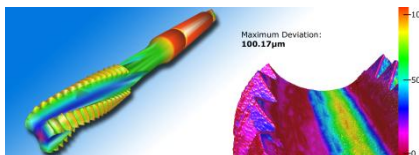
The high resolution measurement of simple geometric shapes as well as curved surfaces are achieved with the measurement of complex geometries such as spheres, cones and cylinders. InfiniteFocus also provides deviations to reference geometry.

Contour-Measurement



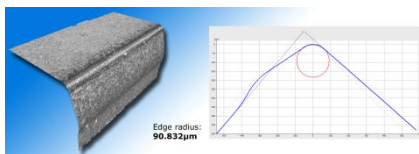
Angles, distances, circles, incircles, circumcircles, thread pitches as well as many other shapes can be measured in every perspective. Profile contours of e.g. drills, taps... can be measured accurately. Measurement results are provided within seconds.

Difference-Measurement



InfiniteFocus measures wear or variance through computing the difference between the surface geometry of a component before and after use. Deviations to a CAD dataset can also be measured automatically.

Edge-Measurement



The measurement of tool parameters ensure the quality of cutting edges and consequently machining results. Radii are measured down to $2\mu\text{m}$ and angles down to 20° .



Contact

Please contact customercare@aliconal.com or your local distributor for a trial version, any questions or purchasing options!